



[www.indesignmagazine.co.uk](http://www.indesignmagazine.co.uk)

DECEMBER 2012

Smashing  
Stuff! Glass in  
Design

A week in the  
life of Tania  
Johnson

Cosy up with  
Fireplaces &  
Heating

Review of  
2012



# Review of 2012



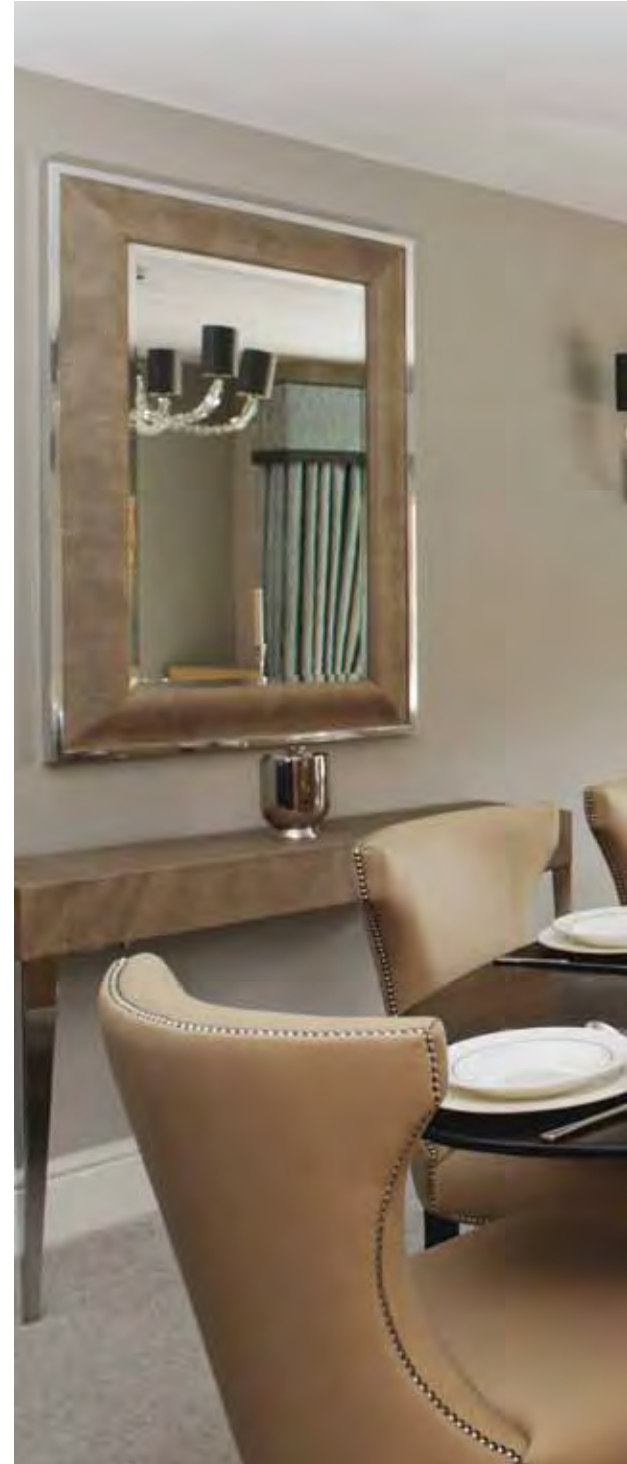
Christine May

December's a good time to cosy up and take a look back at the highlights of the past twelve months...Clare Pascoe of Pascoe Interiors Ltd., Christine May of Christine May Interior Design, Ros Wilson of Roselind Wilson Design, Mark Howorth of Callender Howorth, and Simon Hamilton, interior designer and International Director at the BIID talk to in.Design about their favourite moments

## What was the best exhibition or conference you attended in 2012?

**Christine:** I thoroughly enjoyed the Mark Wilkinson Kitchen Design seminar, which included a tour of Mark's amazing house and garden. The contributors were interesting and well informed and the many delights of the house and garden were inspirational. Mark was also very entertaining. What a character! What an imagination! A fantastic day. Another highlight was the Interior Designers' Guide to Buying at Auction with Anthony Thompson. An invaluable experience for anyone wanting to know how auctions and sale rooms operate.

**Clare:** Having previously found that it was more suited to retail buyers and had become a little samey, I had not visited 100% for a few years. I decided to visit this year and was very pleasantly surprised to see how the show has changed and ▼







Dine in style with Christine May

▲ evolved. Splitting it into four distinct areas focussed the exhibitors into logical groups allowing you to prioritise your time. The Eco section I found of particular interest as working sustainably is an important part of my work.

**Ros:** The Milan Furniture Fair for providing a snapshot of trends for 2012, heaps of inspiration and great ideas across the entire spectrum of styles.

**Mark:** Milan is always such an inspiration (albeit exhausting!) So much to talk about

and some very interesting pieces and I loved many things. Of note, E15 continue to surprise with an exceptional collection of re-editions by renowned modernist architect and designer Ferdinand Kramer such as the Enoki side tables and Sloane dining table.

**Simon:** The best new design show I attended this year has to be the India Design Forum which took place in New Delhi in March. In its first year, the show was very impressive and has placed this amazing city on the global design circuit. Several leading designers and architects were ▼



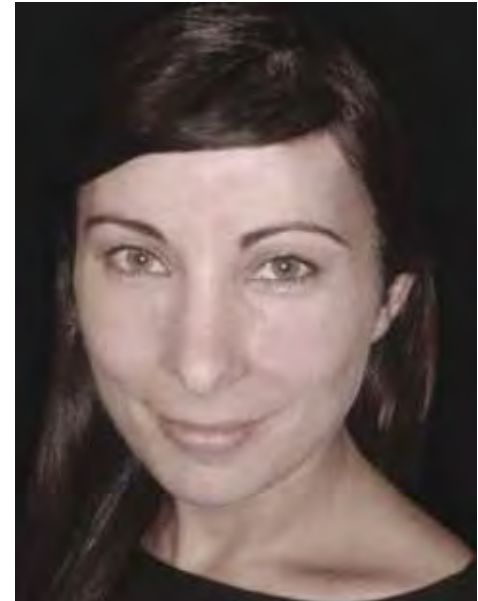
Clare Pascoe



Clare Pascoe makes the most of natural wood



Luxurious bathing from Ros Wilson



Ros Wilson

▲ in attendance from all over India and abroad. Karim Rashid was the star speaker of the two day conference and he delivered an inspiring 60 minute presentation to a captivated audience.

**Do you have a favourite new product you discovered in 2012?**

**Clare:** The cork flooring and 3D wall panelling from Granorte are fantastic materials –offering a practical eco product to create real interest. The 3D panels are particularly inspiring, encouraging me to get

straight back to my desk to design a space in which to use them. They would suit large expanses of wall in commercial corridors or warehouse apartments where there is a need to add depth to a large cavernous space; or in children’s bedrooms and play spaces, where the 3D cork would provide real interest, as well as a practical surface to fix art work to.

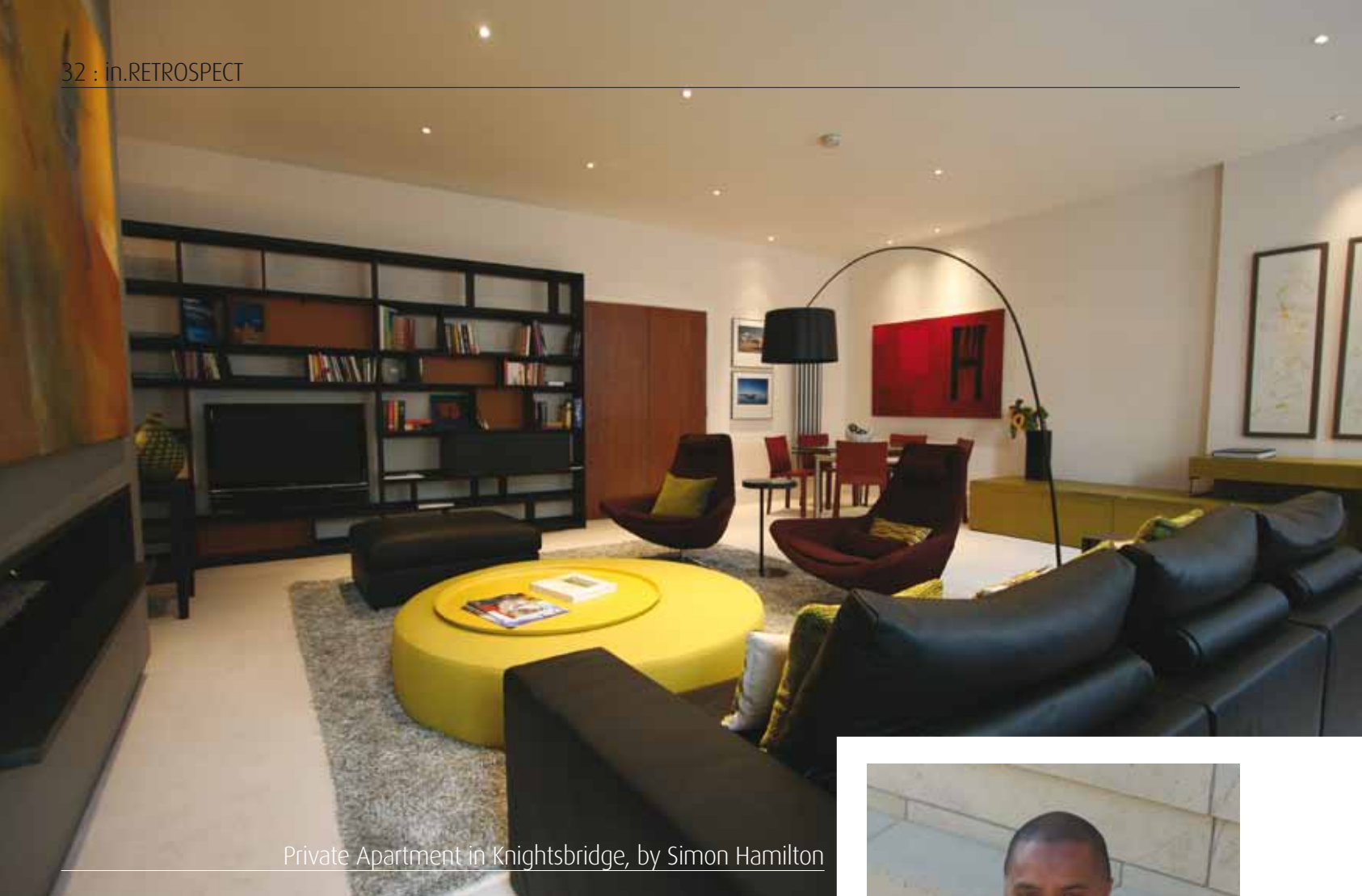
**Simon:** My favourite new product has to be the Tekio modular light system by Anthony Dickens which I saw at Design Junction. They are beautiful to look at and as their Japanese

name suggests very adaptable. A really versatile design which provides different lighting effects for a variety of spaces, which is always a plus for interior designers; I’m already considering using this in a couple of projects.

**Ros:** Notably the Wanders Collection launched by Bisazza Bagno. This bathroom collection allows for seamless integration of traditional and contemporary styles by means of traditional shapes and forms and slick contemporary finishes all brought together by a striking palette of black and white resin, with bursts of red.

**Christine:** I loved the platinum rubbed grass cloth wallcovering shown by Phillip Jeffries at Decorex. It’s sparkly, it’s made from sustainable natural fibres and it’s bio-degradable. What’s not to like! ▼





Private Apartment in Knightsbridge, by Simon Hamilton

▲ **Mark:** We are meeting and sourcing many new suppliers from Portugal and have been very impressed with the lighting from Serip which is a really fresh take on chandeliers and contemporary lighting – our clients love them!

**And what was your own personal or professional highlight of 2012?**

**Mark:** The launch our of new office in Nice has been a definite highlight for the year – and we continue to work with an interesting clientele in the South of France working on

villas, second homes and rental properties.

**Ros:** The realisation that our small studio is starting to create some quite significant waves in the interior design arena. Hard work and passion are starting to pay off. Starting with an award from the UK Property Awards for the best interior designed showhome for the design of a London lateral apartment.

**Christine:** My professional highlight for this year is the press coverage I have gained and a feature of me in printed in this very ▼



Simon Hamilton



Mark Howorth

▲ magazine (Week in the Life, September). I was amazed at how many calls I received from well wishers. Thanks to that feature I've made new friends and renewed old contacts, which was an unexpected bonus and made for a lovely time catching up with everyone at the champagne bar during Decorex!

**Simon:** One personal highlight in 2012, is my re-election to the post of International Director for the British Institute of Interior Design. In this privileged position, I hope to

be able to continue building international relationships for interior designers and extending the reach of the Institute on behalf of its members creating opportunities outside the UK.

**Clare:** I was honoured to be shortlisted for the SBID International Design Awards, and to have received wide ranging acclaim through the interiors press, confirming that my Vintage Contemporary interior design style is inspiring to industry peers as well as our clients.



Beautiful kitchen design by Mark Howorth